

鑽孔主軸頭

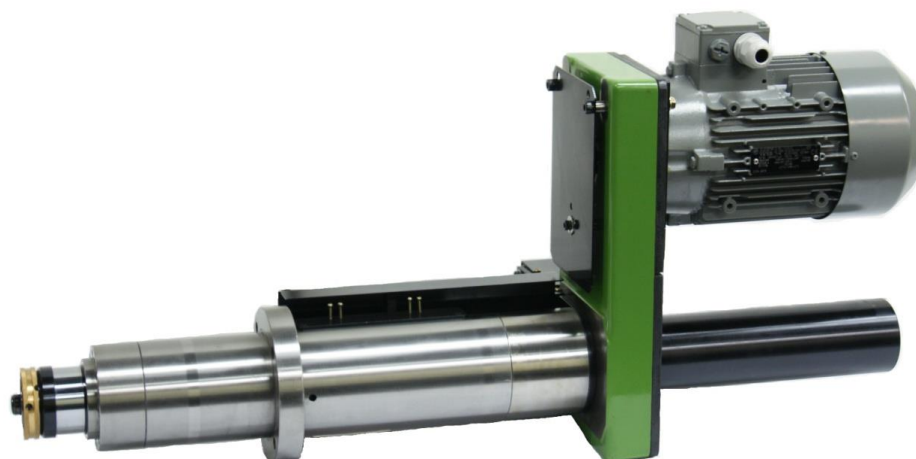
FD67S-85

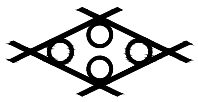
■ 規格

鑽孔能力	Ø 16(S45C), 攻牙能力-M12(S45C)
最大夾持	ER32- Ø 20
總行程	85mm
容許回轉速	4000rpm
進給馬力	0.4kw(伺服馬達)
主軸馬力	1.5kw(AC 馬達或伺服馬達)
重量	35Kg(未加馬達)

■ 消耗品

主軸軸承	7006×2,7005×1
傳動軸軸承	7207×2
前蓋油封	GA 65x75x5/7×1
後蓋油封	DH-45×1

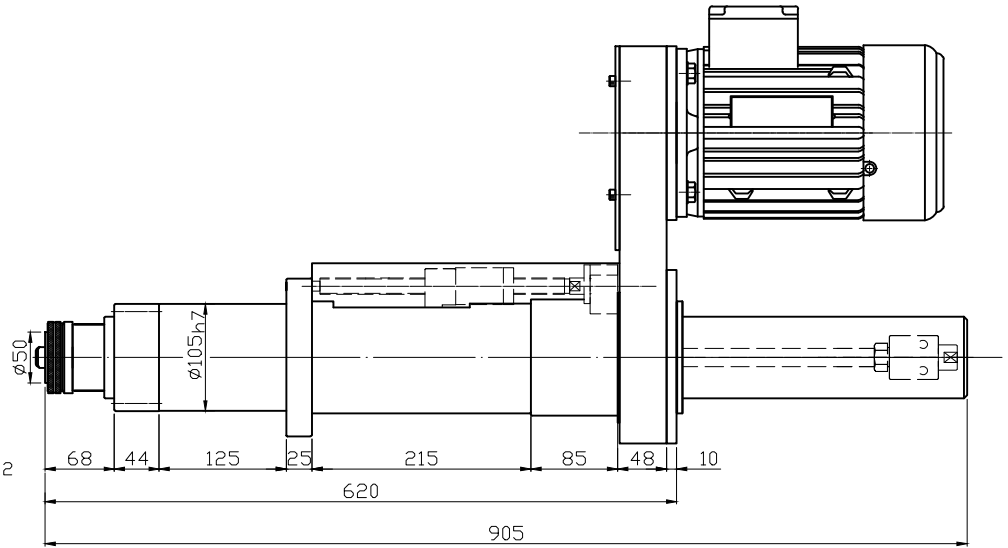
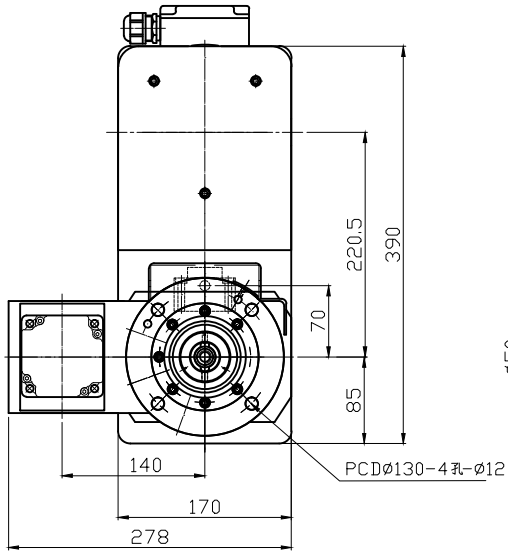




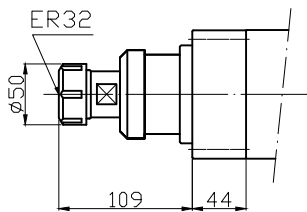
Fanji

鑽孔主軸頭

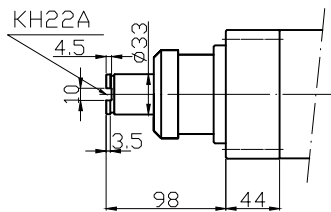
FD67S-85



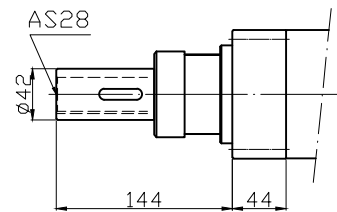
FD67S-85-ER32



FD67S-85-KH22A



FD67S-85-AS28



FD67S-85-HSK40C

